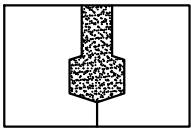
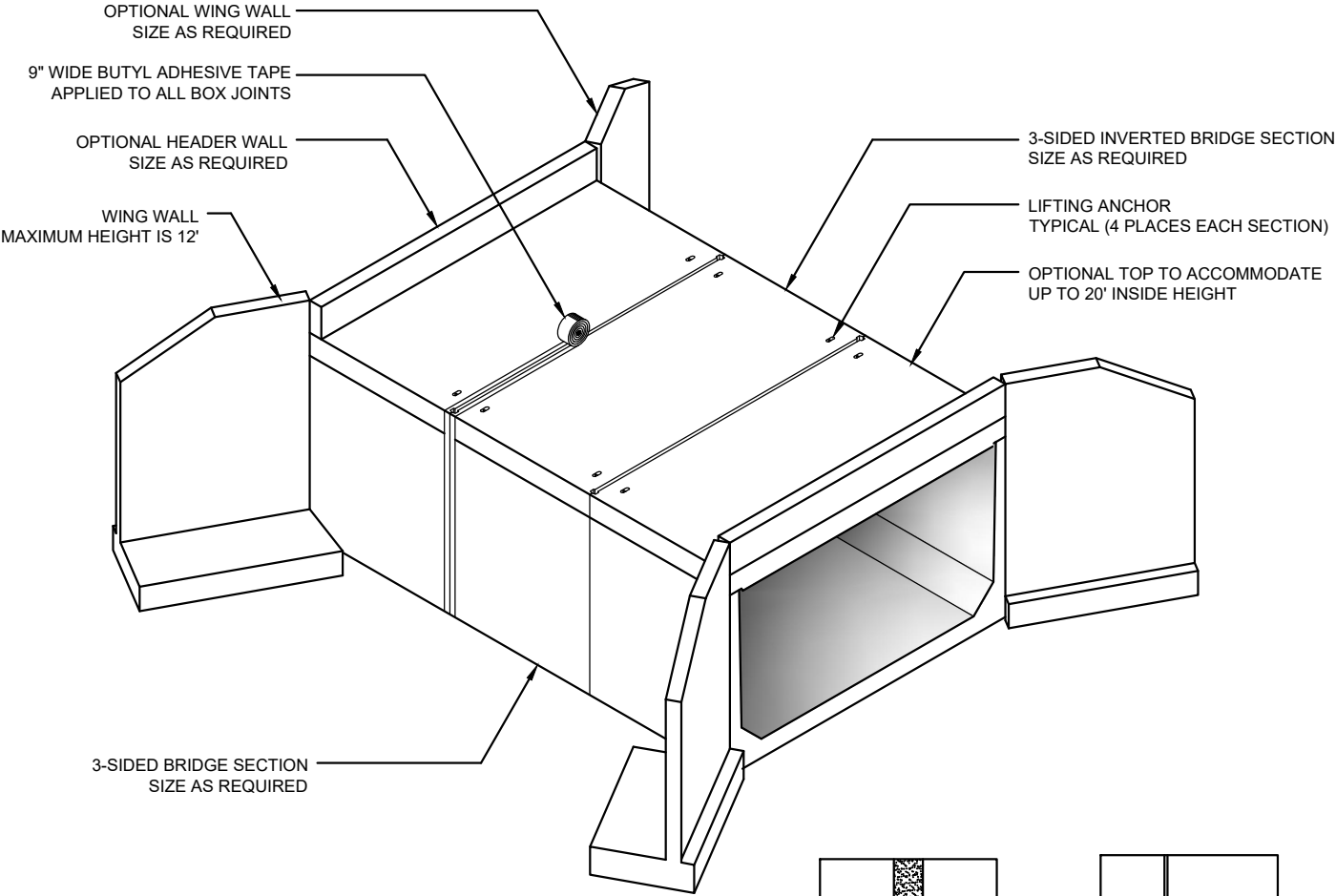
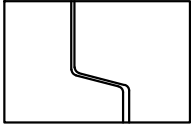


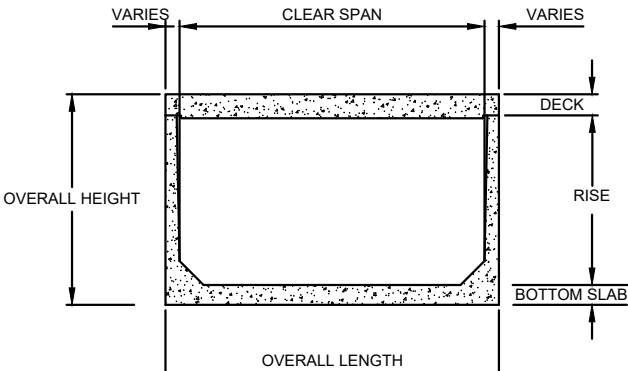
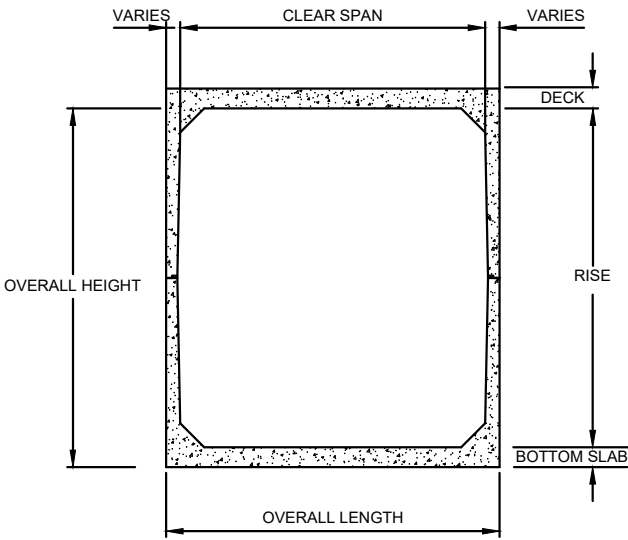
SPLIT BOX CULVERT



GROUT JOINT



SHIPLAP JOINT



- NOTES:**
1. WHERE REQUIRED USE NON-SHRINK GROUT CONFORMING TO ASTM C1107.
 2. EACH BRIDGE JOINT SHALL BE WRAPPED WITH 9" WIDE BUTYL ADHESIVE TAPE.