

Manhole — 7' × 12' (94" × 155")

1 Scope

This specification outlines the minimum requirements for 7' × 12' (94" × 155") manholes to be used in full and incidental traffic areas. The specification applies regardless of whether the customer, contractor, supplier, or PacifiCorp installs the manhole.

2 Applicable Documents

The latest revisions of the documents, standards, codes and requirements listed in 2.1, *PacifiCorp Material Specifications*, and 2.2, Codes and Standards, in effect on the date of invitation to bid apply to the extent specified herein.

2.1 PacifiCorp Material Specifications

ZG 301, *General Equipment Base and Enclosure Requirements*

ZG 311, *Concrete Requirements*

ZG 811, *Full-Traffic Cover and Frame Assembly*

ZG 821, *Incidental-Traffic Cover For Padvaults*

2.2 Codes and Standards

Applicable codes

ANSI standards

IEEE standards

NEMA standards

AASHTO standards

3 General

3.1 Application Information

This specification states material and construction requirements which are applicable only to 7' × 12' (94" × 155") manholes.

3.2 Authorized Material Specification

This material specification shall not be considered valid until each page contains the approval signature or initials of the persons named in the title blocks.

4 Applicable Stock Item Numbers

Materials being submitted for the following PacifiCorp stock item numbers are subject to evaluation in accordance with requirements in this specification.

**MATERIAL SPECIFICATION
Distribution**

© 2012 by PacifiCorp. All rights reserved.

Engineer (E. Maleki): *AEM*
Standards Manager (D. Asgharian): *DDA*

**Manhole — 7' × 12'
(94" × 155")**



8 May 12

ZG 701
Page 1 of 8

ZG 701

4.1 Stock Item Numbers

7992596, MANHOLE, CONCRETE, 7' × 12' (94" × 155"), FULL TRAFFIC, WITH GROUND GRID

7992597, MANHOLE, CONCRETE, 7' × 12' (94" × 155"), INCIDENTAL TRAFFIC, WITH GROUND GRID

5 Design and Manufacturing Requirements

The purpose of a 7' × 12' (94" × 155") manhole is to provide an enclosure for cable pulling, splicing, and single-phase switching.

5.1 Manhole Layout

Figure 3 below shows the assembled 7' × 12' (94" × 155") manholes with dimensions. The manhole is made up of an enclosure with two built in cover assemblies. Unless otherwise approved by PacifiCorp Engineering, all dimensions and placement of hardware shall conform to those shown in Figure 1, Figure 2, Figure 3 and Figure 4 below. All manhole enclosures shall be constructed to AASHTO H-20 (full-traffic) standards, regardless of the cover and frame assembly used.

5.2 Lifting Attachments

Enough lifting attachments shall be provided to ensure safe installation of all pieces at the site.

5.3 Pulling Attachments

Cable pulling attachments shall be installed in the bottom corners of the enclosure such that blocks may be attached for a straight cable pull. Pulling attachments shall be made of galvanized steel and have a minimum pullout strength of 6000 pounds. Cable pulling attachments shall accommodate attachment of a clevis with a one-inch-diameter through-bolt. Pulling attachments may be designed by the manufacturer to meet these requirements.

5.4 Conduit Entrances

The top portion of the enclosure shall have four 6" TERM-A-DUCT entrances on each end, spaced 10 inches center-to-center. For TERM-A-DUCT layout in the top portion, refer to Figure 3. For TERM-A-DUCT layout in the bottom portion, refer to ZG 562.



5.5 Full Traffic Access Cover (SI# 7992596)

Two full traffic rated access covers, as specified in ZG 811, shall be included with the assembly as shown in Figure 1 below. Additional rings may be used to bring to grade; see ZG 811 for grade rings.

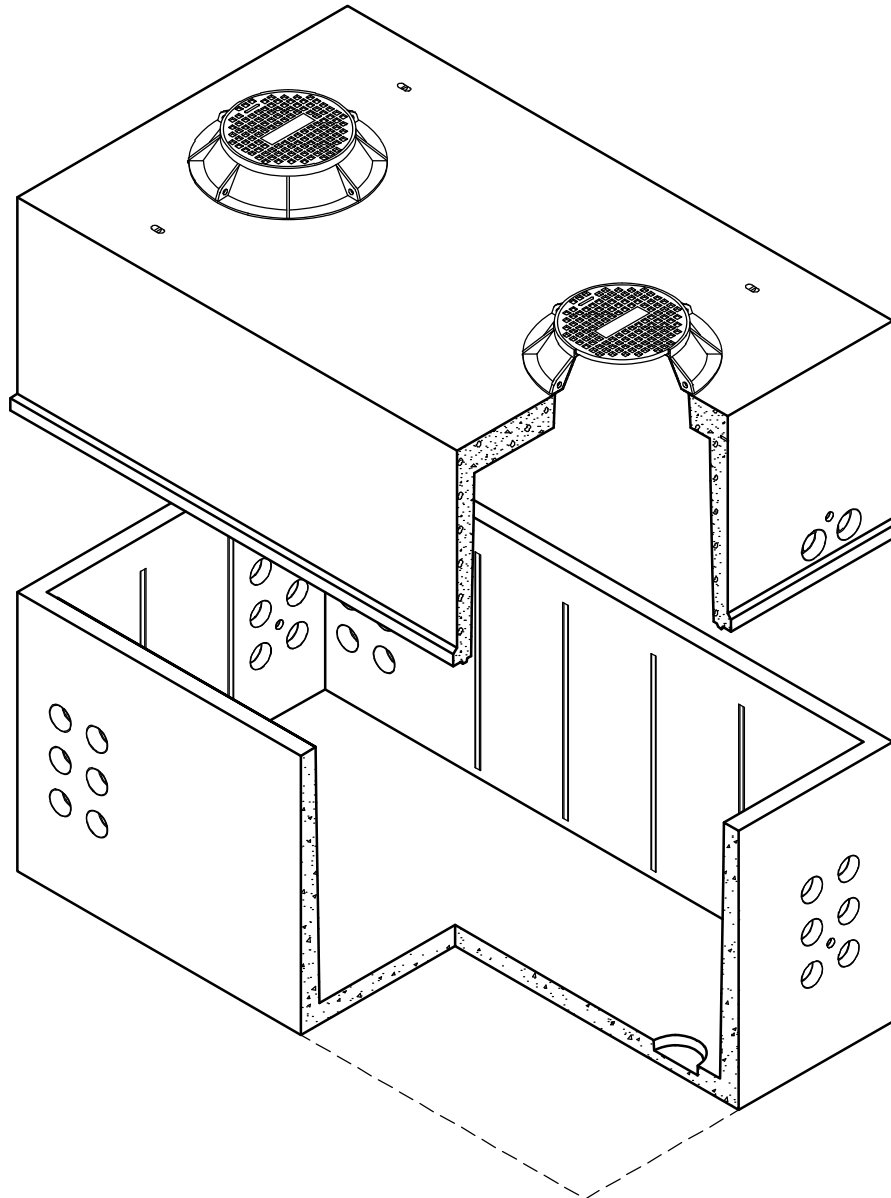


Figure 1—7' × 12' (94" × 155") Manhole with Full-Traffic Covers (SI# 7992596) ■

**MATERIAL SPECIFICATION
Distribution**

© 2012 by PacifiCorp. All rights reserved.

Engineer (E. Maleki): *AEM*
Standards Manager (D. Asgharian): *DDA*

**Manhole — 7' × 12'
(94" × 155")**



8 May 12

ZG 701
Page 3 of 8

ZG 701

5.6 Incidental Traffic Access Door (SI# 7992597)

Two incidental traffic rated doors no larger than 36" × 36", as specified in ZG 821, shall be included with the assembly as shown in Figure 2 below.

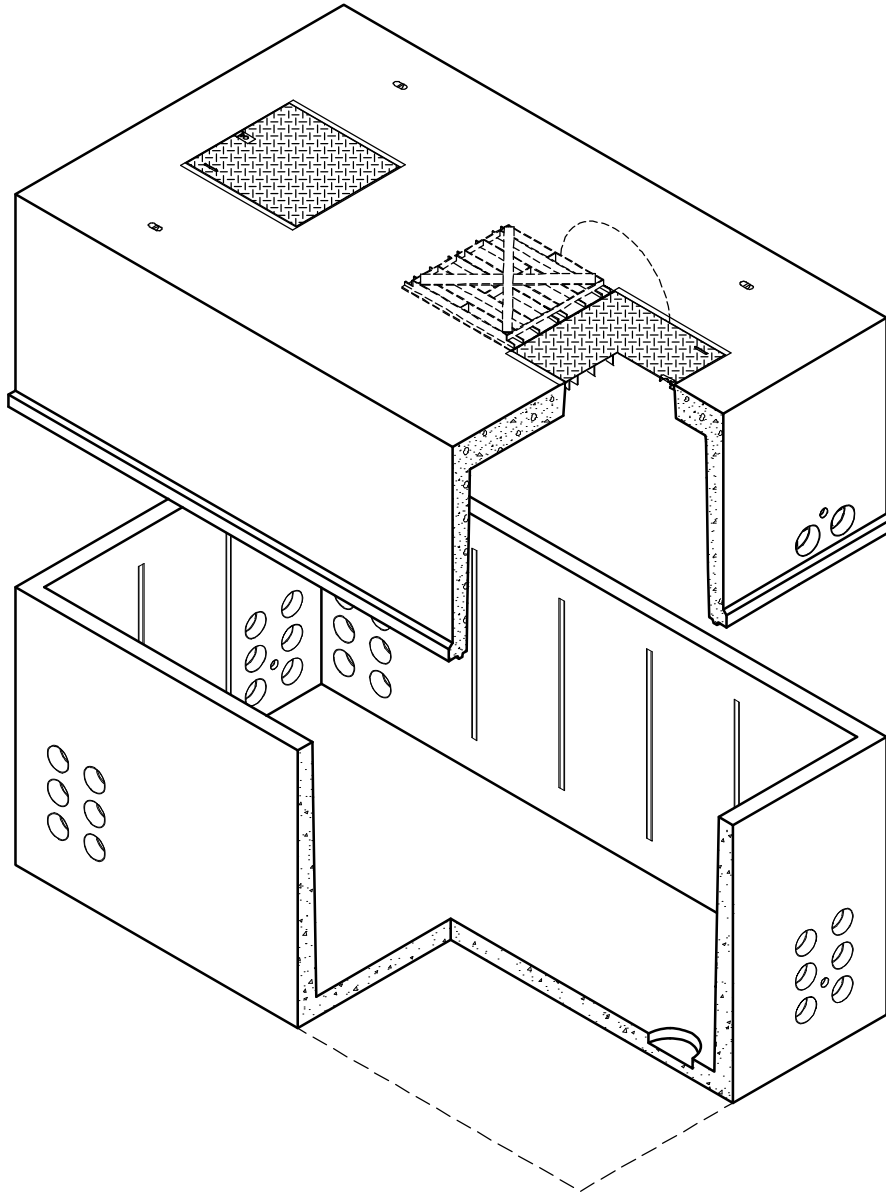


Figure 2—7' × 12' (94" × 155") Manhole with Incidental-Traffic Covers (SI# 7992597)



ZG 701
Page 4 of 8

8 May 12

Manhole — 7' × 12'
(94" × 155")

MATERIAL SPECIFICATION Distribution

© 2012 by PacifiCorp. All rights reserved.

Engineer (E. Maleki): *AEM*
Standards Manager (D. Asgharian): *DDA*

5.7 "C" Channels

Galvanized or fiberglass "C"-channels 1 5/8" wide x 13/16" deep shall be cast into the side walls of the manhole. The top portion shall have four 3' long "C"-channels on each side wall, and two 3' long "C"-channels on each end wall. For layout of "C"-channels in top portion, see Figure 3. For layout of the bottom portion, refer to ZG 562.

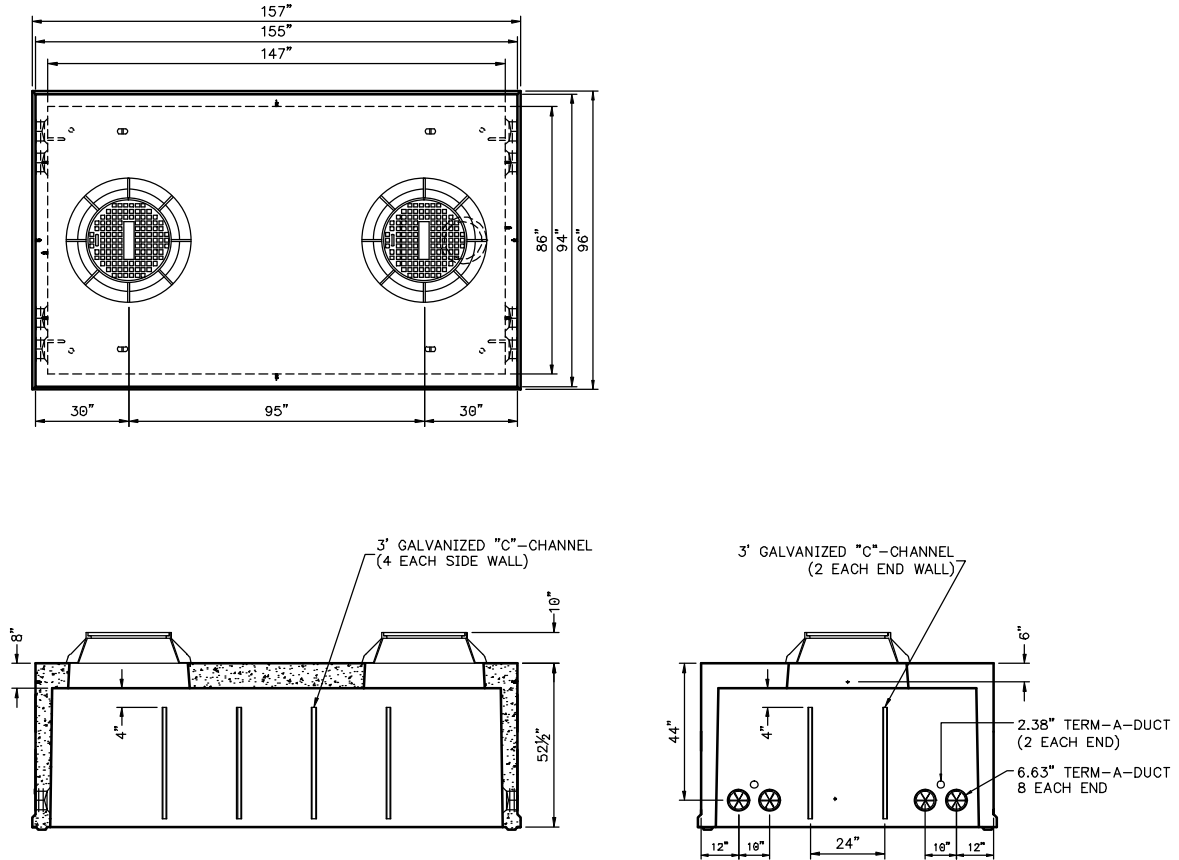


Figure 3—7' x 12' (94" x 155") Manhole Top Layout

**MATERIAL SPECIFICATION
Distribution**

© 2012 by PacifiCorp. All rights reserved.

Engineer (E. Maleki): *AEM*
Standards Manager (D. Asgharian): *DDA*

**Manhole — 7' x 12'
(94" x 155")**



8 May 12

ZG 701
Page 5 of 8

ZG 701

5.8 Grounding Grid

Each section of the 7' × 12' (94" × 155") manhole shall be constructed with an encased electrode meeting NESC 094.B.6. The 3/8" steel rebar shall be 20 continuous feet in length (except for a 12" break in the loop). The grounding system shall attach to a connection insert of high-strength bronze alloy, threaded to 1/2" 13UNC. The vertical rebar attaching to the bronze insert shall be welded or connected by a copper-clad 5/8" ground clamp to the 3/8" steel rebar grounding loop.

The 3/8" steel rebar loops of the top and bottom portions must be connected at each end by a piece of bare 4/0 copper wire, connected to the two internal grounding inserts found on each end. For the layout of the top section's ground grid, refer to Figure 4. For the bottom section, refer to ZG 562.

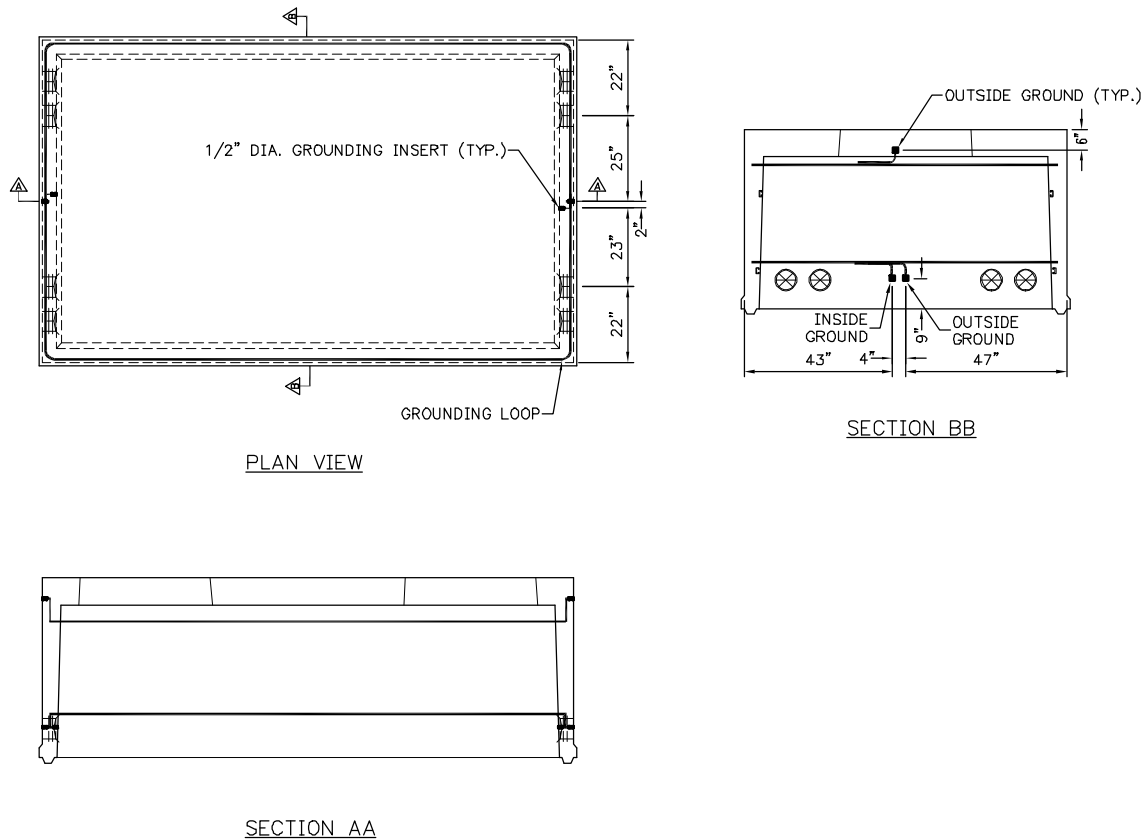


Figure 4—7' × 12' (94" × 155") Manhole Top Section Ground Grid



ZG 701
Page 6 of 8

8 May 12

Manhole — 7' × 12'
(94" × 155")

MATERIAL SPECIFICATION Distribution

© 2012 by PacifiCorp. All rights reserved.

Engineer (E. Maleki): *AEM*
Standards Manager (D. Asgharian): *DDA*

5.9 Installation

This unit shall be set at the site by the supplier. The contractor shall be responsible to ensure that a 6" base of 3/4"-minus gravel, compacted to 90% of dry density is supplied, and shall be no more than 2% off level prior to setting the manhole. The interface between the cover and frame assembly and the enclosure shall be sealed using a waterproof substance, such as tar or mastic. The top of the access cover shall be flush with the final grade. Setting depth shall be determined by the local regulatory authority for full-traffic areas.

6 Testing

6.1 Test Compliance

Manholes submitted under this specification shall meet all tests and requirements contained in ZG 301 – *General Equipment Base and Enclosure Requirements*, ZG 311 – *Concrete Requirements*, and this specification. Manholes shall also comply with requirements in applicable national standards.

7 Issuing Department

The Engineering Documentation department of PacifiCorp published this document. Questions regarding editing, revision history and document output may be directed to the lead editor at (503) 813–5293. Technical questions and comments may be directed to Ehsan Maleki, Standards Engineering, (503) 813–7089.

This document shall be used and duplicated only in support of PacifiCorp projects. This document is considered a valid publication when the signature blocks below have been signed by the authoring engineer and standards manager.

**MATERIAL SPECIFICATION
Distribution**

© 2012 by PacifiCorp. All rights reserved.

Engineer (E. Maleki): *AEM*
Standards Manager (D. Asgharian): *DDA*

**Manhole — 7' × 12'
(94" × 155")**



8 May 12

ZG 701
Page 7 of 8

ZG 701

This page is left blank intentionally.



ZG 701
Page 8 of 8

8 May 12

Manhole — 7' × 12'
(94" × 155")

MATERIAL SPECIFICATION **Distribution**

© 2012 by PacifiCorp. All rights reserved.

Engineer (E. Maleki): *AEM*
Standards Manager (D. Asgharian): *DDA*