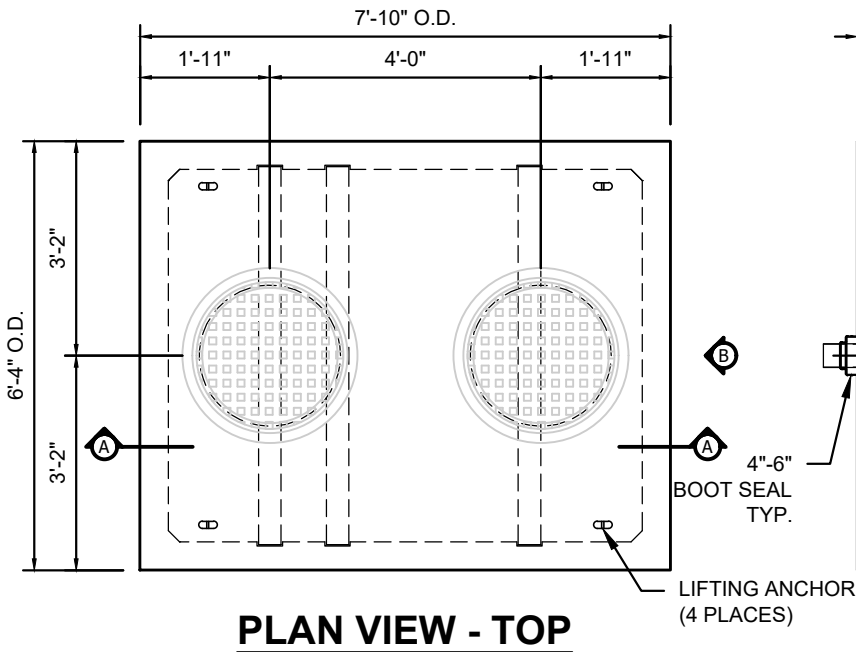
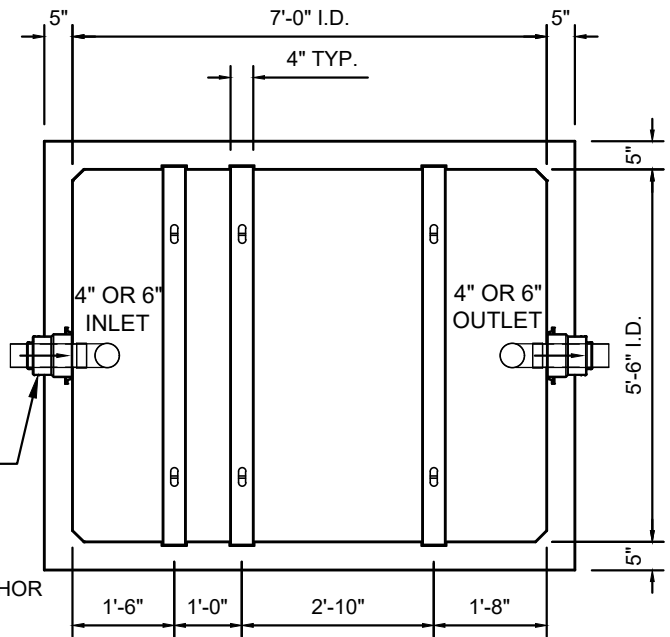


1000 OIL WATER SEPARATOR (675)

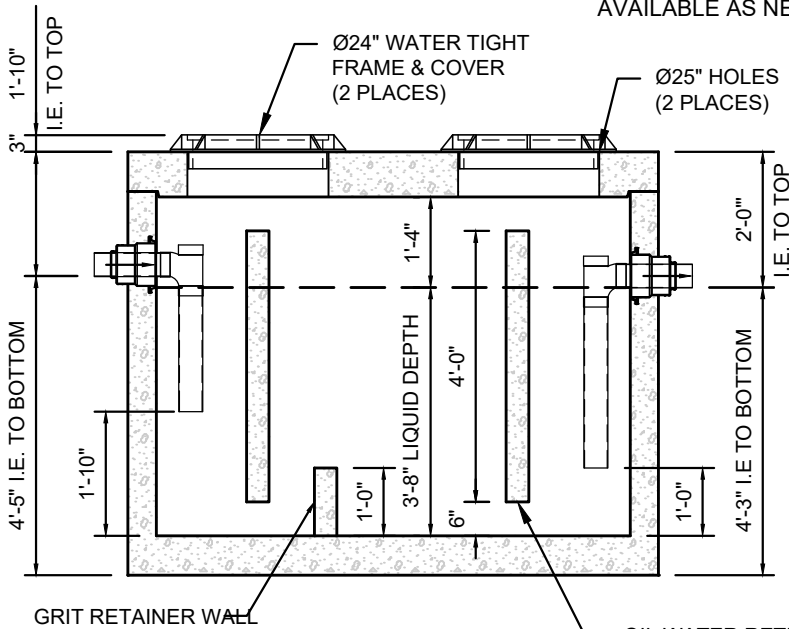


PLAN VIEW - TOP



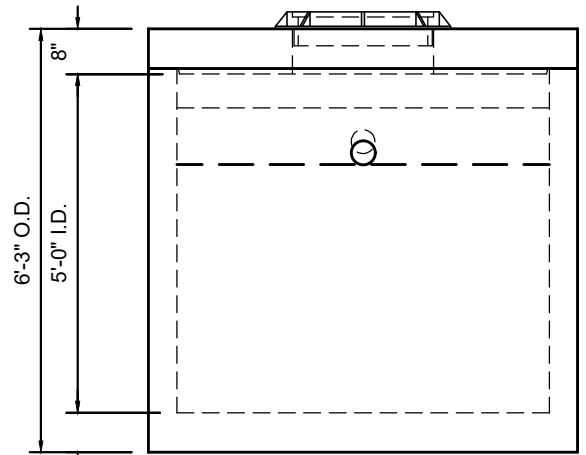
PLAN VIEW - BASE

2", 3", 4" AND 6"
GRADE RINGS
AVAILABLE AS NEEDED



SECTION A-A

OIL WATER RETENTION Baffle
TYPICAL (2 PLACES)



VIEW-B

PIPE AND FITTINGS
NOT SHOWN FOR
CLARITY

NOTES:

1. HEAVIEST PICK WEIGHT = APPROX. 13,600LBS.
2. VAULT MEETS OR EXCEEDS ASTM-C857 & H20-44.
3. 33.6 GPM FLOW RATE AT 30 MINUTE RETENTION.
4. 288 GALLONS PER VERTICAL FOOT.
5. 1,000 GALLON CAPACITY AT 3'-6" LIQUID DEPTH.
6. IT IS THE RESPONSIBILITY OF THE OWNER TO SERVICE THIS UNIT.